



SOCIETY FOR
SAMBA AMBULATORY ANESTHESIA

Register online at www.SAMBAhq.org

SAMBA 28th ANNUAL MEETING

AMBULATORY ANESTHESIA: FUTURE PROOFING YOUR PRACTICE

April 11-14, 2013

JW Marriott Camelback Inn ♦ Scottsdale, Arizona



Jointly Sponsored by



Your ROI...

- Your Complete Perioperative Educational Meeting
- More CME Credits
- NEW Simulation Workshop
- Thursday Session is Included in Your Registration Fee
- Session Formats to Meet Your Needs
- Resident Workshops Included with \$99 Registration
- Additional Lecture Series
- Face Time with the Experts

Program Information

Jointly sponsored by:

American Society of
Anesthesiologists



and

SOCIETY FOR
SAMBA
AMBULATORY
ANESTHESIA

Target Audience

This meeting is designed for anesthesiologists, anesthesia providers, practitioners, nurses, and administrators who work and specialize in ambulatory or office-based anesthesia.

About This Meeting

Topics for this meeting were selected by various methods. Suggestions for topics were derived from evaluations of the 2012 and other previous Annual and Mid Year Meetings. In addition, the Annual and Mid Year Meeting Committees and Board members reviews the published literature with the highest impact on the specialty, and solicits suggestions from members of SAMBA active in the clinical practice of ambulatory anesthesia, and improve patient safety and outcomes. These suggestions were discussed by our authorities in the field of ambulatory anesthesia with educators who attended previous annual, mid-year and board meetings.

The purpose of this annual meeting is to educate and share information that will enable anesthesiology practitioners to provide the highest level of ambulatory anesthesia services and improve patient outcomes.

CME Accreditation

This activity has been planned and implemented in accordance with the Essential Areas and policies of the Accreditation Council for Continuing Medical Education through the joint sponsorship of the American Society of Anesthesiologists and the Society for Ambulatory Anesthesia. The American Society of Anesthesiologists is accredited by the ACCME to provide continuing medical education for physicians.

The American Society of Anesthesiologists designates this live activity for a maximum of *27 AMA PRA Category 1 Credit(s)*[™]. Physicians should claim only the credit commensurate with the extent of their participation in the activity.

Disclaimer

The information provided at the above CME activities is for continuing medical education purposes only and is not meant to substitute for the independent medical judgment of a physician relative to diagnostic and treatment options of a specific patient's medical condition.

Disclosure

The American Society of Anesthesiologists and the Society for Ambulatory Anesthesia adheres to ACCME Essential Areas, Standards, and Policies regarding industry support of continuing medical education. Disclosure of the planning committee and faculty's commercial relationships will be made known at the activity.

Learning Objectives

SAMBA 2013 Annual Meeting Goals

As the complexity of healthcare in the outpatient arena increases, the availability of on-site resources to help care for the patient with complex medical problems undergoing basic to highly innovative procedures has not followed suit. As a result, it is increasingly important for the anesthesiologist to evolve into the consummate perioperative physician. In addition, issues of quality, patient safety and regulatory compliance are now being addressed at the forefront of ambulatory practice. The overall goal of this annual meeting is to provide the ambulatory and office-based anesthesiologist with the knowledge and tools necessary to independently care for the increasingly complex patient in the ambulatory setting.

General Session 1: Production Pressures

At the completion of this session, the attendee should be able to discuss strategies to create efficient systems to mitigate production pressure; review the elements of a procedure that may make it desirable or undesirable to manage in the ASC environment; align systems of patient selection to mitigate production pressure; and focus operational improvement strategies to improve overall ASC strategies.

General Session 2: Building the Ultimate ASC: The Team Approach

At the completion of this session, the attendee should be able to discuss the interplay between the various stakeholders in making an ASC successful. Also, specialty specific perspectives will be presented allowing the participant to appreciate how to create and enhance a collaborative work environment.

General Session 3: Accessing Medical Information in the "I" Age

At the conclusion of this session, participants should be able to appreciate both the complexity and opportunity with the explosion of mobile technology now available and being adapted to the medical work environment. Attendees will discuss the various venues for gathering validated medical reference information, as well as how to use this information in real-time. Finally, participants should be able to evaluate how simulation technology can fit into their ongoing educational requirements.

Panel: Social Learning and the Age of MOOCs

Participants should be able to define the meaning of social media, social learning and online communities of practice and identify key aspects of learning management systems and massively open online courses that allow students to collaborate and learn together.

General Session 4: Running the Regulatory Gauntlet: What's on the Horizon

Participants should be able to comprehend the topic of CMS mandated anesthesia oversight for procedural sedation; discuss anesthesiologists reimbursement for various sedation methods; and identify the regulatory issues regarding CMS/TJC.

General Session 5: Current Status of the ASC Industry

Participants should be able to examine the current regulations and political "hot topics" affecting the ASC industry, review current business trends shaping the future status of the ASC industry and discuss current Center for Medicare and Medicaid Services (CMS) quality reporting requirements on ASC's.

General Session 6: Personal Growth

Attendees should be able to recognize the signs and symptoms of physician burnout; develop strategies to prevent physician burnout; discuss the options and mechanisms for providing medical services in underdeveloped countries; and design an anesthetic utilizing minimal equipment and personnel.

Statement of Need

The SAMBA Annual Meeting provides a forum devoted to ambulatory and office-based anesthesia offering clinically relevant lectures, panels and workshops; highlights of innovative ambulatory and office-based practices; networking opportunities with peers and experts in the field; and exposure to relevant products/services of interest to our attendees in the exhibits area.

Resolutions of Conflicts of Interests

In accordance with the ACCME Standards for commercial support of CME, the American Society of Anesthesiologists and the Society for Ambulatory Anesthesia will implement mechanisms, prior to the planning and implementations of the activity, to identify and resolve conflicts of interest for all individuals in a position to control content of this CME activity.

Special Needs

The Society for Ambulatory Anesthesia fully complies with the legal requirements of the Americans with Disabilities Act and the rules and regulations thereof. If any attendee in this educational activity is in need of accommodations, please contact SAMBA at (847) 825-5586.

Commercial Support Acknowledgement

The CME activity is supported by educational grants. A complete list of supporters will be published in the program guide.

General Session 7: ½ Hot and Have Not

At the completion of this session, the attendee should be able to explain the importance of normothermia during surgery on patient outcomes; articulate the pay for performance system as it relates to normothermia; identify the common causes for anesthesia drug shortages; access resources for obtaining current information on ongoing drug shortages; implement strategies to work around current drug shortages; develop strategies to acquire commonly used supplies conveniently and economically; and explain the mechanism for supply chain breakdowns.

General Session 8: Journal Club

Attendees should be able to compare and contrast recent pertinent literature for ambulatory anesthesia from leading high impact scientific publications and integrate this information into their daily practice.

Consult the Experts

These small group sessions are specifically designed to provide an opportunity for open and detailed discussions of relevant ambulatory anesthesia and surgery topics. Expert speaker session formats may range from a relatively unstructured "open house", where attendees can stop by and ask specific questions to prepared introductory topic remarks followed by open discussion by the small group.

ASA Update

Attendees should be able to relate the American Society of Anesthesiologists' role in an educational, research and scientific association of physicians and delineate how practitioners can use its resources to enhance their patient care and professional activities.

Cases from the Real World

Participants should be able to examine actual case scenarios and integrate various methods of care and strategies for preclinical problem solving for ambulatory surgical patients into their daily practice.

PBLD

Participants should be able to discuss and critique the evaluation, management and implementation of patient care in specific ambulatory clinical scenarios.

Excellence and Innovation:

Abstract Presentations

Participants will be able to describe focused ambulatory anesthesia knowledge gained through research as presented by scientific abstract awardees.

Ask the Experts – Pain Issues in the ASC

Participants will discuss and differentiate issues relating to pain procedures in an ambulatory surgery center. Participants will then be able to modify their current procedures as needed.

Lecture Series: Acute Pain Control – Not an Option Anymore

Participants will review current practices that are not applicable in today's pain setting. Participants will also examine new methods to treat acute pain control and the alterations that are needed by current practitioners.

Resident Session

Participants will discuss the difference between inpatient and ASC-type charges for all patient care; be able to understand how our costs can affect a facility and even touch on the anti-kickback legislation that CMS ruled on recently; understand what is involved in an anesthesia work contract including tails, partnership, and employment versus contract work; and be able to apply anesthesia skill set to patient care and administration in and out of the operating room.

Hands On Workshop:

Regional Ultrasound Techniques

Based on participant expertise, attendees will be able to demonstrate both basic and advanced techniques for peripheral nerve blocks using 'single shot' techniques as well as and regional catheters for ambulatory anesthetic management. Attendees will also be able to describe common or serious complications of regional techniques and how to both manage and avoid them.

Resident Focus

Are you getting close to graduating and interviewing for jobs? Maybe you've done your subspecialty rotations and wonder what else is out there for anesthesiologists? Do CPT codes mean anything to my billing? The answer to these questions and more will be given by leaders in ambulatory anesthesia in a relaxed, small group setting. Meena Desai, M.D. will speak about billing from the point of view of a private practitioner who does office-based and ambulatory anesthesia. Alan Marco, M.D. will speak on employment contracts from the point of view of a department chair. Dan Goulson, M.D., a hospital-system medical director in Kentucky, will speak about anesthesia opportunities not necessarily related to the operating room. All Residents are eligible to attend our Hands-On Workshop on Regional Ultrasound Technique. This session is led by expert Roy A. Greengrass, M.D. *Advanced registration is required.*

Mock Oral Exams

Saturday, April 13, 2013, 12:00 - 1:00 p.m.

This American Board of Anesthesia (ABA) APPLIED EXAMINATION, formerly the ABA Part 2 (oral) examination, has long been known for the unique challenges it presents, both in its unique format as well as in the very special set of test-taking skills examinees will need to pass.

This session of the SAMBA Annual Meeting is aimed at residents and new resident-graduates who wish to develop this specific skill-set needed to pass the ABA Oral Board Exam. The session is designed to provide a realistic oral board exam experience, with participants functioning as "examinees" in at least two individual practice exam sessions, designed to be one-on-one with designated faculty. Our faculty examiners, many of whom are previous ABA oral board examiners, will administer a private 15-20 minute practice oral board exam followed by an individualized 5-10 minute feedback session focused not on fund-of-knowledge, but rather on the strategies necessary to navigate the exam rubric utilized by the ABA.

Clinical stems will be provided at the beginning of the session. Participants are not required to do any specific preparation. Lunch will be served.

Objectives: At the end of this session, participants will (1) be familiar with the format and objectives of the ABA Applied (Oral) Examination; (2) participate in at least two practice oral board exam sessions; (3) grow in understanding of the qualities that define a successful exam performance; (4) develop strategies to improve exam performance.

Resident Focused Program

Saturday, April 13, 2013

Resident Travel Awards

11:30 a.m. – 12:00 p.m.

Resident Luncheon: Mock Oral Exams

12:00 p.m. – 1:00 p.m.

Resident Hands-On Workshop: Regional Ultrasound Techniques* (Max 30)

1:00 p.m. – 3:00 p.m.

**registration required*

Parallel Track: Resident Session

3:15 p.m. – 5:15 p.m.

- Career Possibilities in Anesthesia
- Employment Contracts: What to Look For and Know About
- Anesthesia Billing
- Question and Answer Session

SAMBA Social Event: Brother Eagle, Sister Sky

6:30 p.m. - 9:30 p.m.

New Simulation Session

Learning Objectives:

1. Discuss the role of simulation in handling critical or rare events;
2. Apply teamwork tools using crisis resource management skills;
3. Analyze teams in action using team behavior rating scales;
4. Demonstrate management of challenging scenarios using simulation;
5. Reflect on self-performance and commit to practice change improvements.

*Separate Registration Required

Friday, April 12, 2013, 1:15 - 3:15 p.m.

Saturday, April 13, 2013, 3:15 - 5:15 p.m.

Session Description:

Simulation training provides opportunities to manage critical or rare events and learn effective teamwork skills. Simulation education is a MOCA Part 4 requirement for ABA diplomates graduating in or after 2004. This session aims to provide an introduction to simulation for participants who have had little or no experience with simulation during their residency training.

Each two-hour session begins with an orientation to simulation. In each of two scenarios, volunteers will play active roles in the scenarios. Two volunteers will be in the "hot seat". Two additional volunteers will be blinded and "called in" for help. The teams will receive feedback in the form of debriefing by simulation instructors. The audience will actively observe and participate in discussions after the simulations. This will serve to reinforce clinical knowledge, as well as teamwork and communication skills, based on crisis resource management principles. There will be an opportunity for all participants to ventilate, intubate, and familiarize themselves with the hi-fidelity simulator.

Please note that this is not a MOCA course, and participation will not meet the ABA MOCA Part IV requirements. However, these simulations will resemble hi-fidelity simulation experiences with an actual simulator, similar to those encountered at a course offered by an ASA Simulation Education Network (SEN) endorsed program, and can offer exposure to simulation training and teamwork skills.



Program Schedule

Wednesday, April 10, 2013

4:00 p.m. – 7:30 p.m. Annual Meeting Registration

Thursday, April 11, 2013

8:00 a.m. – 5:00 p.m. Annual Meeting Registration

9:00 a.m. - 9:30 a.m. Coffee Service

9:20 a.m. – 9:30 a.m. Welcome and Opening Remarks

9:30 a.m. – 11:45 a.m. General Session 1: Production Pressures
Moderator: Daniel T. Goulson, M.D.

You Might Not Want That Procedure If...
Douglas G. Merrill, M.D., M.B.A.

Patients You Don't Want
J. Thomas McLarney, M.D.

Efficiencies To Deal With
Daniel T. Goulson, M.D.

11:45 a.m. – 12:30 p.m. SCOR Informal Session and Boxed Lunch
(available to all meeting attendees)

12:30 p.m. – 2:30 p.m. General Session 2: Building the Ultimate ASC: The Team Approach
Moderator: Aubrey Maze, M.D., FAAP

Surgeon Perspective
David Ott, M.D.

Nurse Perspective
Sue Nance, R.N., C.A.S.A.

Medical Director Perspective
John D. Curtis, M.D.

1:00 p.m. - 6:00 p.m. SAMBA Committee Meetings

2:30 p.m. – 2:45 p.m. Coffee Break

2:45 p.m. – 4:45 p.m. General Session 3: Accessing Medical Information in the "i" Age
Moderator: J. Lance Lichtor, M.D.

Simulation and Technology, Update 2013
Catherine R. Rodziewicz, M.D.

Using a Tablet in the OR-Better Than Stone, Still Challenged by Papyrus
Joseph F. Foss, M.D.

Social Learning and the Age of MOOCs
Larry Chu, M.D., M.S.

Medical Decision Support
Albert A. Woo, M.D.

Alternative Learning
J. Lance Lichtor, M.D.

5:30 p.m. – 7:00 p.m. Welcome Reception with Exhibitors

Friday, April 12, 2013

7:00 a.m. – 5:00 p.m. Annual Meeting Registration

7:00 a.m. - 10:00 a.m. SAMBA Committee Meetings

7:00 a.m. – 7:30 a.m. Breakfast and Moderated Poster Session

7:30 a.m. – 8:45 a.m. General Session 4: Running the Regulatory Gauntlet: What's on the Horizon
Moderator: Walter G. Maurer, M.D.

CMS Mandated Anesthesia Oversight for Procedural Sedation
Baseem Abdelmalak, M.D.

Anesthesiologists Involved in All Forms of Sedation. But Will We Be Paid for Being Involved?
Walter G. Maurer, M.D.

CMS/TJC Regulatory Issues from the ASA's Perspective
Maureen A. Amos, M.S.

8:45 a.m. – 9:45 a.m. ASA Update
John M. Zerwas, M.D.

9:45 a.m. – 10:45 a.m. Coffee Break in Exhibit Area; Moderated Poster Session

10:45 a.m. - 11:45 a.m. SAMBA Frontiers Lectureship
Paul F. White, Ph.D., M.D., FANZCA

1:15 p.m. – 3:15 p.m. Lecture Series: Acute Pain Control – Not An Option Anymore
Moderator: Roy A. Greengrass, M.D.

Multimodal Anesthesia
Eugene R. Viscusi, M.D.

Local Anesthetic Adjuvants
Steven B. Porter, M.D.

Ambulatory Continuous Regional Analgesia
Steven R. Clendenen, M.D.

TAP and Paravertebral Blocks – Indications and Performance
Christopher B. Robards, M.D.

1:15 p.m. - 3:15 p.m. Hands-on Workshop: Simulation (Max 20)*
Moderator: Catherine R. Rodziewicz, M.D.
Marjorie Steigler, M.D.; Niraja Rajan, M.D.
see page 4 for more details on this workshop

3:15 p.m. – 3:30 p.m. Coffee Break and Networking

*Additional Charge

Welcome Reception with Exhibitors

Thursday, April 11, 2013, 5:30 – 7:00 p.m.

Network with colleagues at this year's welcome reception. See the newest products and technologies affecting ambulatory and office-based surgery.



Program Schedule

Visit our Exhibit Hall

SAMBA has an exciting exhibit hall with a variety of companies to help improve your practice. At this year's annual meeting, attendees will have a chance to win prizes including Marriott credit, gift certificates and a cabana at the JW Marriott Camelback Inn pool for Friday and Saturday. In order to enter and win, attendees must be present during the exhibit hours as follows:

Thursday, April 11, 2013

5:30 – 7:00 p.m.
Welcome Reception with Exhibitors

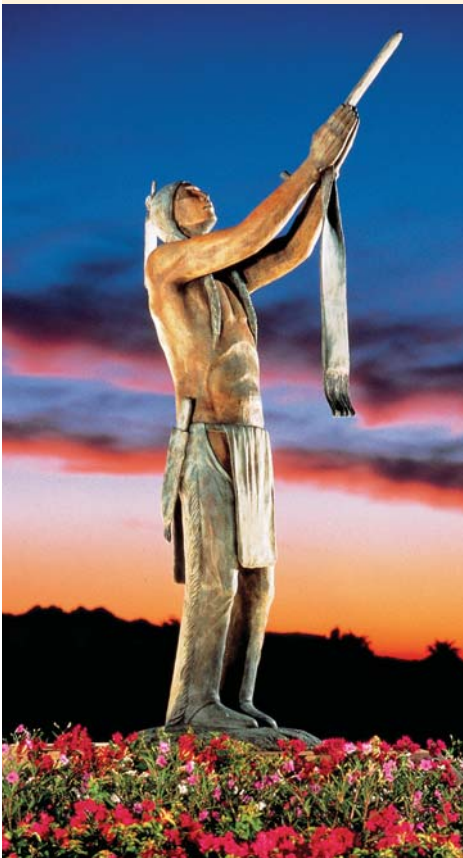
Friday, April 12, 2013

9:00 a.m. – 1:00 p.m.
Exhibit Hall is open*
9:45 a.m. – 10:45 a.m.
Coffee Break with Exhibitors

Saturday, April 13, 2013

9:00 a.m. – 1:00 p.m.
Exhibit Hall open*
9:30 a.m. – 10:30 a.m.
Coffee Break in Exhibit Area

*Attendees are welcome to visit or make appointments with exhibitors at this time.



Friday, April 12, 2013 (cont)

3:30 p.m. – 4:30 p.m.

PBLD

Pediatrics

Raafat S. Hannallah, M.D.

Acute Pain in the ASC

Eugene R. Viscusi, M.D.

Strategies to Improve Quality of Recovery After Ambulatory Surgery

Gildasio S. De Oliveira, Jr. M.D.

Morbid Obesity in the Free Standing Ambulatory Center

Randall J. Malchow, M.D.

3:30 p.m. – 5:30 p.m.

Hands-On Workshop: Regional Ultrasound Techniques (Max 40)*

Moderator: Roy A. Greengrass, M.D.

Steven B. Porter, M.D.; Christopher B. Robards, M.D.;

Steven R. Clendenen, M.D.

4:30 p.m. – 5:30 p.m.

Consult the Experts

Sedation Guidelines

Walter G. Maurer, M.D.

Simulation, MOCA and Licensure

Catherine R. Rodziewicz, M.D.; Marjorie Steigler, M.D.

Supply Chain

Scott Mayer

OBA

Arnaldo Valedon, M.D.

Saturday, April 13, 2013

7:00 a.m. – 5:00 p.m.

Annual Meeting Registration

7:00 a.m. – 11:30 a.m.

SAMBA Committee Meetings

7:00 a.m. – 7:30 a.m.

Breakfast and Moderated Poster Session

7:30 a.m. – 9:30 a.m.

General Session 5: Current Status of the ASC Industry

Moderator: Kumar G. Belani, M.D., MBBS, M.S., FACA, FAAP

William Prentice, J.D.; Arnaldo Valedon, M.D.; Beall D. Gary, Jr., J.D.

9:30 a.m. – 10:30 a.m.

Coffee Break in Exhibit Area; Moderated Poster Session

10:30 a.m. – 11:30 a.m.

General Session 6: Personal Growth

Moderator: Donald M. Mathews, M.D.

Burnout

Gildasio S. De Oliveira, Jr. M.D.

Ambulatory Extremes

Randall J. Malchow, M.D.

11:30 a.m. – 12:00 p.m.

Business Meeting and Awards

Distinguished Service Award

Presenter: Raafat S. Hannallah, M.D.

Recipient: Kathryn E. McGoldrick, M.D.

White Mountain Awards

Paul F. White, M.D., Ph.D., FANZCA

Resident Travel Awards

Douglas G. Merrill, M.D., M.B.A.

Excellence and Innovation Award

Douglas G. Merrill, M.D., M.B.A.

*Additional Charge

12:00 p.m. – 1:00 p.m.	Boxed Lunch	
12:00 p.m. – 1:00 p.m.	Resident Luncheon: Mock Oral Exams Moderator: Kumar Belani, M.D. Kumar Belani, M.D.; Steven Butz, M.D.; Christopher M. Burkle, M.D.; Ramprasad Sripada, M.D.; Alan Sessler, M.D.; Tracey Smith Stierer, M.D.; David S. Beebe, M.D.; Bobbie Jean Sweitzer, M.D.	
1:00 p.m. – 5:30 p.m.	SAMBA Golf Outing* <i>see page 12 for more information</i>	
1:00 p.m. – 3:00 p.m.	Cases From the Real World Moderator: Barbara S. Gold, M.D. Randall J. Malchow, M.D.; Walter G. Maurer, M.D.; Steven F. Butz, M.D.	Resident Hands-On Workshop: Regional Ultrasound Techniques (Max 30) Moderator: Roy A. Greengrass, M.D. Christopher B. Robards, M.D.; Steven B. Porter, M.D.; Steven R. Clendenen, M.D.
3:00 p.m. – 3:15 p.m.	Coffee Break	
3:15 p.m. – 5:15 p.m.	Resident Session Moderator: Steven F. Butz, M.D. 3:30 p.m. – Career Possibilities 4:00 p.m. in Anesthesia Daniel T. Goulson, M.D. 4:00 p.m. – Employment Contracts: 4:30 p.m. What to Look For and Know About Alan P. Marco, M.D., MMM, CPE, FACPE 4:30 p.m. – Anesthesia Billing 5:00 p.m. Steven F. Butz, M.D. 5:00 p.m. – Question and Answer 5:15 p.m. Session	Ask the Experts - Pain Issues in the ASC Moderator: Eugene R. Viscusi, M.D. Pain Blocks for the Non-Pain Specialist David M. Rosenfeld, M.D. Multimodal Analgesia in the Ambulatory Setting Eugene R. Viscusi, M.D. Practice Management Pearls Tory L. McJunkin, M.D., DABA; Paul J. Lynch, M.D.
Must Pick One		



Hands-on Workshop: Simulation
(Max 20)*
Moderator: Catherine R. Rodziewicz, M.D.
Marjorie Steigler, M.D.; Niraja Rajan, M.D.
*see page 4 for more details
on this workshop*

6:30 p.m. - 9:30 p.m. SAMBA Social Event: Brother Eagle, Sister Sky *Additional Charge

Sunday, April 14, 2013

7:30 a.m. – 8:00 a.m.	Continental Breakfast
8:00 – 10:00 a.m.	General Session 7: ½ Hot and Have Not Moderator: Donald M. Mathews, M.D. Temperature Moderating in the Ambulatory Setting Barry M. Florence, M.D., Ch.B. Supply Shortages Scott Mayer Drug Shortages Bobbie Jean Sweitzer, M.D. MH Donald M. Mathews, M.D.
10:00 – 10:15 a.m.	Coffee Break
10:15 - 10:45 a.m.	Excellence and Innovation: Abstract Presentations Douglas G. Merrill, M.D., M.B.A.
10:45 a.m. – Noon	General Session 8: Journal Club Moderator: J. Lance Lichtor, M.D. Anesthesia and Analgesia Alan P. Marco, M.D., MMM, CPE, FACPE Anesthesiology J. Lance Lichtor, M.D. Not Anesthesiology or Anesthesia and Analgesia Bobbie Jean Sweitzer, M.D.
12:00 p.m.	Adjourn

**SAMBA Social Event:
Brother Eagle,
Sister Sky**

Camelback Resort
Mummy Mountain
Saturday, April 13, 2013
6:30 p.m. - 9:30 p.m.

SAMBA welcomes all registrants to attend its Social Event on Saturday, April 13th. This year SAMBA will embrace the Native American heritage throughout Arizona with its theme of "Brother Eagle, Sister Sky". While enjoying Camelback's excellent cuisine and refreshing beverages, attendees will listen to one of Scottsdale's greatest local bands, watch a live Native American dance performance and learn about Arizona's Birds of Prey. Attendees will also be able to shop for native jewelry and other items. Attendees can practice their skills with a gun and tomahawk activity or view the stars, a SAMBA attendee favorite. Don't plan on missing this event. This is a great opportunity to relax with old and new friends! Attendees repeatedly state that SAMBA's social events are the best way to really connect with your colleagues.

Program Faculty

Brian M. Parker, M.D., Chair
Associate Professor of Anesthesiology
Department of General Anesthesiology
Cleveland Clinic
Cleveland, OH

Michael T. Walsh, M.D., Vice Chair
Assistant Professor Anesthesia
Mayo Clinic School of Medicine
Rochester, MN

Basem Abdelmalak, M.D.
Associate Professor of Anesthesiology
Cleveland Clinic Lerner College of Medicine
Director, Anesthesia for Bronchoscopic Surgery
Director, Center for Sedation
Department of General Anesthesiology
Anesthesiology Institute
Cleveland Clinic
Cleveland, OH

Maureen A. Amos, M.S.
Director, Quality and Regulatory Affairs
American Society of Anesthesiologists
Washington, DC

David S. Beebe, M.D.
Residency Program Director
University of Minnesota Medical School
and School of Public Health
Minneapolis, MN

Kumar G. Belani, M.D., MBBS, MS, FACA, FAAP
Professor of Anesthesiology, Medicine & Pediatrics
Professor of Environmental Health Sciences
University of Minnesota Medical School
and School of Public Health
Minneapolis, MN

Christopher M. Burkle, M.D., J.D.
Assistant Professor of Anesthesiology
Mayo School of Graduate Medical Education
Rochester, MN

Steven F. Butz, M.D.
Medical Director
Assistant Professor
Children's Hospital of Wisconsin Surgicenter
Department of Anesthesiology
Medical College of Wisconsin
Milwaukee, WI

Larry Chu, M.D., M.S.
Assistant Professor and Director of the Stanford
Anesthesia Informatics and Media (AIM) Lab
Stanford University School of Medicine
Department of Anesthesiology
Stanford, CA

Steven R. Clendenen, M.D.
Chair, Section of Regional Anesthesiology
Assistant Professor of Anesthesiology
Mayo Clinic College of Medicine
Jacksonville, FL

John D. Curtis, M.D.
Medical Director, OASIS
Valley Anesthesia Consultants, Ltd.
Phoenix, AZ

Gildasio S. De Oliveira, Jr. M.D.
Associate Chair for Research
Assistant Professor
Department of Anesthesiology
Fienberg School of Medicine
Northwestern University
Chicago, IL

Meena S. Desai, M.D.
Managing Partner
Nova Anesthesia Professionals
Villanova, PA

Barry M. Florence, M.D., Ch.B.
Associate Professor
Director of Ambulatory Surgery Center
Department of Anesthesia
SUNY Stony Brook Health Sciences Center
Stony Brook, NY

Joseph F. Foss, M.D.
Director of Clinical Research for
General Anesthesiology
Cleveland Clinic Foundation
Cleveland, OH

Charlotte Garcia, CRNA, MS
Instructor of Clinical Anesthesiology
Director, USC Program of Nurse Anesthesia
Simulation Center
Keck School of Medicine of USC
Department of Anesthesiology
Los Angeles, CA

Beall D. Gary, Jr., J.D.
President and Chairperson of the Board
Ambulatory Surgery Center Association
Alexandria, VA
Chief Operating Officer
Regent Surgical Health
Westchester, IL

Barbara S. Gold, M.D.
Professor of Anesthesiology
SVP Clinical Quality
University of Minnesota Physicians
Department of Anesthesiology
University of Minnesota
Minneapolis, MN

Daniel T. Goulson, M.D.
Chief Medical Officer
Bon Secours Kentucky Health System
Ashland, KY

Roy A. Greengrass, M.D.
Professor of Anesthesiology
Mayo Clinic Jacksonville
Jacksonville, FL

Raafat S. Hannallah, M.D.
Professor of Anesthesiology and Pediatrics
The George Washington University Medical Center
Division of Anesthesiology
Children's National Medical Center
Washington, DC

J. Lance Lichtor, M.D.
Professor
Departments of Anesthesiology and Pediatrics
Yale University School of Medicine
Pediatric Anesthesiology Section Chief and
Fellowship Director
New Haven, CT

Paul J. Lynch, M.D.
Arizona Pain Specialists
Scottsdale, AZ

Randall J. Malchow, M.D.
Associate Professor of Clinical Anesthesiology
Regional Anes and Acute Pain Management
Division of Ambulatory Anesthesiology
Vanderbilt University
Nashville, TN

Alan P. Marco, M.D., MMM, CPE, FACPE
Chairman of Anesthesiology
Residency Program Director
Clinical Service Chief
University of Toledo College of Medicine
Toledo, OH

Donald M. Mathews, M.D.
Associate Professor
Residency Program Director
Fletcher Allen Health Care/University of Vermont
Burlington, VT

Walter G. Maurer, M.D.
Section Chief, Ambulatory Anesthesia
Department of Anesthesiology
Cleveland Clinic Foundation
Novelty, OH

Scott Mayer
CEO, Ambulatory Management Solutions
Office-Based Billing Specialists
Mobile Anesthesiologists (Chicago, Houston, Florida,
North Carolina, Georgia, Missouri)
Pro Cure - An Anesthesia Procurement Company

Aubrey Maze, M.D., FAAP
CEO
Valley Anesthesiology Consultants
Clinical Professor of Anesthesiology
University of Arizona
Phoenix, AZ

Kathryn E. McGoldrick, M.D.
Professor and Chair
Department of Anesthesiology
New York Medical College
Valhalla, NY

Tory L. McJunkin, M.D., DABA
Founder, Arizona Pain Specialists
Founder, Boost Medical
Practice and Surgery Center Development
Scottsdale, AZ

J. Thomas McLarney, M.D.
Associate Professor
Medical Director, Anesthesiology
Preoperative Assessment Clinic
Co-Director, Center for Simulation
University of Kentucky, College of Medicine
Lexington, KY

Douglas G. Merrill, M.D., M.B.A.
Director, the Center for Peri-Operative Services
Dartmouth-Hitchcock Medical Center
Professor, Anesthesiology
The Geisel School of Medicine
Dartmouth-Hitchcock Medical Center
Lebanon, NH

Susan Nance, R.N., C.A.S.C.
Center Director, Gateway Surgery Center
Phoenix, AZ

David Ott, M.D.
Surgeon, OASIS
Valley Anesthesia Consultants, Ltd.
Phoenix, AZ

Steven B. Porter, M.D.
Assistant Professor of Anesthesiology
Mayo Clinic Jacksonville
Neptune Beach, FL

William Prentice, J.D.
Chief Executive Officer
Ambulatory Surgery Center Association
Alexandria VA

Niraja Rajan, M.D.
Medical Director, Hershey Outpatient Surgical Center
Assistant Professor of Anesthesiology
Penn State Milton S. Hershey Medical Center
Hershey, PA

Christopher B. Robards, M.D.
Assistant Professor of Anesthesiology
Mayo Clinic Jacksonville
Jacksonville, FL

Catherine R. Rodziewicz, M.D.
Assistant Professor of Clinical Anesthesia
University of Southern California
Los Angeles, CA

David M. Rosenfeld, M.D.
Assistant Professor of Anesthesiology
Chairman, Division of Pain Medicine
Department of Anesthesiology
Mayo Clinic Arizona
Phoenix, AZ

Alan D. Sessler, M.D.
Retired Anesthesiologist
Mayo Clinic College of Medicine
FAER President Emeritus
Rochester, MN

Ramprasad Sripada, M.D., M.M.M., C.P.E.
Associate Professor of Clinical Anesthesiology
Vanderbilt University Medical Center
Nashville, TN

Marjorie Stiegler, M.D.
Assistant Professor of Anesthesiology
Director of Medical Simulation
University of North Carolina at Chapel Hill
Chapel Hill, NC

Tracey Smith Stierer, M.D.
Assistant Professor of Anesthesiology
and Critical Care Medicine
Division Director of Clinical Quality
The Johns Hopkins University School of Medicine
Baltimore, MD

Bobbie Jean Sweitzer, M.D.
Professor of Anesthesia and Critical Care
Professor of Medicine
Director of Anesthesia Perioperative
Medicine Clinic
University of Chicago
Chicago, IL

Paul F. White, Ph.D., M.D., FANZCA
President, White Mountain Institute
Los Altos, CA
Director of Clinical Research
Department of Anesthesia
Cedars Sinai Medical Center in Los Angeles
Visiting Scientist
Research Unit of Anesthesia and Intensive Care
Rizzoli Orthopedic Institute
University of Bologna, Italy

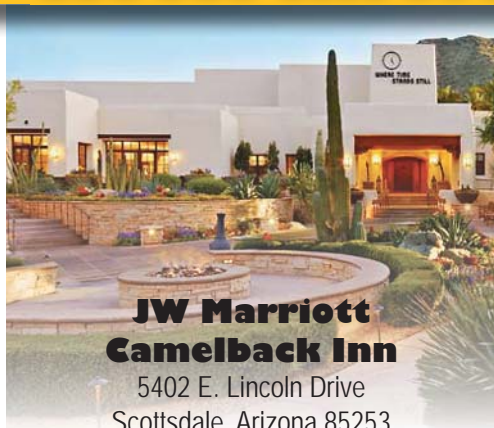
Albert A. Woo, M.D.
Anaesthesia Associates of Massachusetts
Westwood, MA

Arnaldo Valedon, M.D.
Chief Ambulatory Division and Managing Partner
First Colonies Anesthesia Associates
Baltimore, MD

Eugene R. Viscusi, M.D.
Professor of Anesthesiology
Director, Acute Pain Management
Thomas Jefferson University
Philadelphia, PA

John M. Zerwas, M.D.
President
American Society of Anesthesiologists
Richmond, TX

Hotel Information



**JW Marriott
Camelback Inn**
5402 E. Lincoln Drive
Scottsdale, Arizona 85253
Phone: (480) 948-1700
www.marriott.com

The room rate for SAMBA Annual Meeting attendees is \$279.00. for single/double occupancy, plus applicable taxes. This rate will apply for arrival up to three days prior to the meeting and for departure up to three days after the conclusion of the meeting, based on availability. To make your hotel reservation, please call Marriott reservations at 1(800) 242-2635 or 1(480) 948-1700 or go [online](#).

All reservations must be guaranteed with a major credit card. The deadline date to make your hotel reservation is March 11, 2013. The SAMBA group rate at the Camelback Inn is for those persons only that are attending the SAMBA Annual Meeting. SAMBA reserves the right to revoke the group rate for those not registered for the Annual Meeting.

The Camelback Inn is situated on 125 acres of Sonoran Desert landscaping and is backed by Mummy Mountain. This full service resort offers a wide variety of services and amenities. For more information, see www.marriott.com.

All SAMBA attendees will receive complimentary wireless internet in their sleeping rooms during their stay.

Transportation

SAMBA Annual Meeting attendees may fly to Phoenix Sky Harbor Airport; the Camelback Inn is 9 miles from the airport. Estimated taxi fare is \$35 one way or rental cars are available. Complimentary on-site and valet parking at the hotel.

SAMBA 28th ANNUAL MEETING

Ambulatory Anesthesia: Future Proofing Your Practice

April 11-14, 2013 ♦ JW Marriott Camelback Inn ♦ Scottsdale, Arizona

Early registration deadline is March 15, 2013. Early registration is recommended as space is limited. On-site registration for the Annual Meeting will be open at 4:00 p.m. on Wednesday, April 10, 2013. Please complete all information accurately as any incomplete and/or inaccurate information may delay your registration from being processed.

First Name	M.I.	Last Name	Degrees
Title		Institution/Hospital/ASC	
Address			ABA#
City	State	ZIP code	Country
Phone Number	Fax Number	E-mail Address	

Annual Meeting Registration

(Annual Meeting registration does not include the Hands-on Workshops or the golf event)

Registration includes: all educational presentations (excluding optional workshops), the course syllabus, coffee breaks, continental breakfasts, luncheons and social activity.

	Before March 15	After March 15
<input type="checkbox"/> SAMBA Member Active	\$750.00	\$850.00
<input type="checkbox"/> SAMBA Member Affiliate	\$750.00	\$850.00
<input type="checkbox"/> Non-member*	\$850.00	\$950.00
<input type="checkbox"/> AA and Nurse Anesthetists (CRNA)	\$725.00	\$775.00
<input type="checkbox"/> Other Non Physician (Administrator)	\$475.00	\$525.00
<input type="checkbox"/> Nurse (RN)	\$575.00	\$625.00
<input type="checkbox"/> Resident	\$99.00	\$99.00
Registration Subtotal	\$ _____	\$ _____

*Registration includes one year free membership. This only applies to those attendees that have not been a SAMBA member within the past 5 years. Active Membership requires membership within ASA

Optional Workshops

(Please fill out selection on page 2 of registration form)

Optional Workshops Subtotal from Page 2 \$ _____

Payment (Discover not accepted)

- Check *(payable to the Society for Ambulatory Anesthesia; must be in U.S. funds and drawn from a U.S. bank)*
 Visa American Express MasterCard

Credit Card Number _____ Expiration Date _____

Billing Address _____

Name on Card _____

Signature _____

Social Evening: Brother Eagle, Sister Sky

Saturday, April 13, 2013 from 6:30 p.m. - 9:30 p.m.

(Dinner, drinks, and entertainment included)

- Yes, I will attend *(Entertainment included in the registration fee for attendees)*

Additional spouse, adult and children tickets are required and may be purchased as follows:

Number of Adults (other than yourself) _____ x \$75 \$ _____

Number of Children (ages 13 and older) _____ x \$50 \$ _____

Number of Children (ages 12 and under) _____ No charge

Social Evening Subtotal \$ _____

(Tickets will be collected onsite when entering this event)

SAMBA Golf Outing

Saturday, April 13, 2013 from 1:00 p.m. – 5:30 p.m. \$100

Golf Outing Subtotal \$ _____

(Tickets will be collected onsite when entering this event)

Registration Subtotal	\$ _____
Optional Workshops Subtotal from Page 2	\$ _____
Social Evening Subtotal	\$ _____
Golf Outing Subtotal	\$ _____
GRAND TOTAL	\$ _____

Cancellation Policy

Cancellation of meeting registration must be received in writing and will be accepted until March 15, 2013. After March 15, there will be no refunds. Your refund, less a \$200 administrative fee, will be sent after the conclusion of the meeting.

Please mail or fax pages 1 and 2 of registration form with payment to:

SAMBA

520 N. Northwest Highway ♦ Park Ridge, IL 60068-2573

Phone: (847) 825-5586 ♦ Fax: (847) 825-5658

SAMBA 28th ANNUAL MEETING

Ambulatory Anesthesia: Future Proofing Your Practice

April 11-14, 2013 ♦ JW Marriott Camelback Inn ♦ Scottsdale, Arizona

First Name	M.I.	Last Name	Degrees
City	State	Phone Number	

PLEASE NOTE: Annual Meeting registration is required for all Optional Workshops; some enrollments are limited.

Optional Workshops *(Annual Meeting registration is required)*

Please select your workshops below and fill out amount at bottom of page.

Friday, April 12, 2013	Before March 15	After March 15	Saturday, April 13, 2013	Before March 15	After March 15
<input type="checkbox"/> Hands-on Workshop: Simulation (Max 20) 1:15 p.m. - 3:15 p.m.			<input type="checkbox"/> Hands-on Workshop: Simulation (Max 20) 3:15 p.m. - 5:15 p.m.		
SAMBA Member	\$75.00	\$100.00	SAMBA Member	\$75.00	\$100.00
Nonmember	\$75.00	\$100.00	Nonmember	\$75.00	\$100.00
Resident*	\$15.00	\$30.00	Resident*	\$15.00	\$30.00
<input type="checkbox"/> Hands-on Workshop: Regional Ultrasound Techniques (Max 40) 3:30 p.m. - 5:30 p.m.		 Resident Only Workshops - Complimentary Saturday, April 13, 2013		
Member	\$100.00	\$125.00	<input type="checkbox"/> Resident Hands-On Workshop: Regional Ultrasound Techniques (Max 30) 1:00 p.m. - 3:00 p.m.		
Nonmember	\$100.00	\$125.00		
Optional Workshops Subtotal \$ _____ (transfer amount to page 1)			Optional Workshops Subtotal \$ _____ (transfer amount to page 1)		

*Residents will be accommodated on a space-available basis

Dietary or Special Needs

- I will need special assistance.
- I will require kosher meals.
- I will require vegetarian meals.
- I will require gluten free meals.

Please mail or fax pages 1 and 2 of registration form with payment to:

SAMBA
 520 N. Northwest Highway • Park Ridge, IL 60068-2573
 Phone: (847) 825-5586 • Fax: (847) 825-5658
 www.SAMBAhq.org



SAMBA's Golf Outing

PADRE COURSE

Saturday, April 13, 2013 ♦ 1:00 – 5:00 p.m.
Additional Registration Required

Enjoy an afternoon golfing with colleagues and friends on one of Scottsdale's best courses. The Padre course features towering trees, subtle landforms and notable bunkering. This 18 hole course designed by Arthur Hills will provide a challenging yet enjoyable afternoon in the sun. SAMBA's golf outing will begin with a shotgun start at 1:00 p.m. Foursomes will be assigned by SAMBA but requests may be sent to J.Goldberger@asahq.org.



SAMBA 28th ANNUAL MEETING

AMBULATORY ANESTHESIA: FUTURE PROOFING YOUR PRACTICE

April 11-14, 2013 ♦ JW Marriott Camelback Inn ♦ Scottsdale, Arizona

Be sure to mark your calanders for these future meetings...



SAMBA Mid Year Meeting

Friday, October 11, 2013
San Francisco, California



SAMBA 29th Annual Meeting

April 24-27, 2014
Baltimore Marriott Waterfront Hotel
Baltimore, Maryland



SAMBA Mid Year Meeting

Friday, October 10, 2014
New Orleans, Louisiana